

# USING MAPS TO SUPPORT TOBACCO EVALUATION: An Overview of ArcGIS and Tableau

Lindsay Kephart, MPH

MA Tobacco Cessation and Prevention Program (MTCP)

Massachusetts Department of Public Health



# Overview

GIS to  
support  
evaluation  
efforts

Best uses of  
*Tableau*  
software  
and ArcGIS

Live  
Tableau  
Demo

# Evaluation activities



Demonstrating tobacco-related influence in the community



Mapping geographic disparities



Prioritization of program resources



Measuring program impact



Policy tracking & evaluation

# **Demonstrating tobacco-related influence in the community**

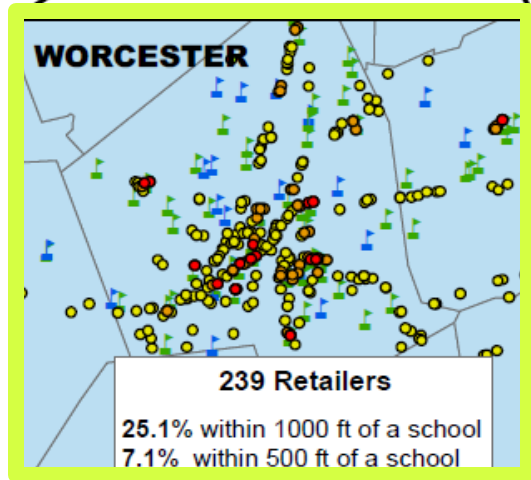
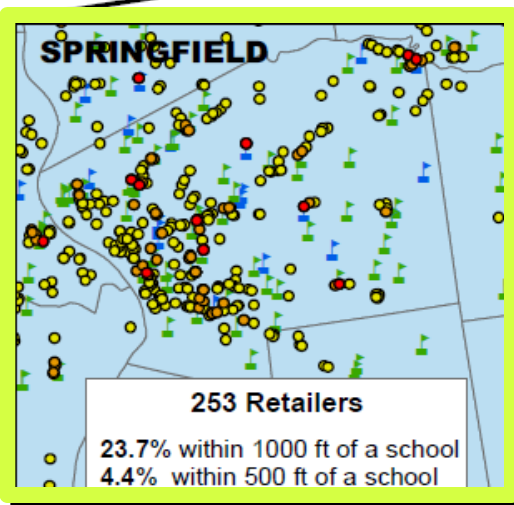
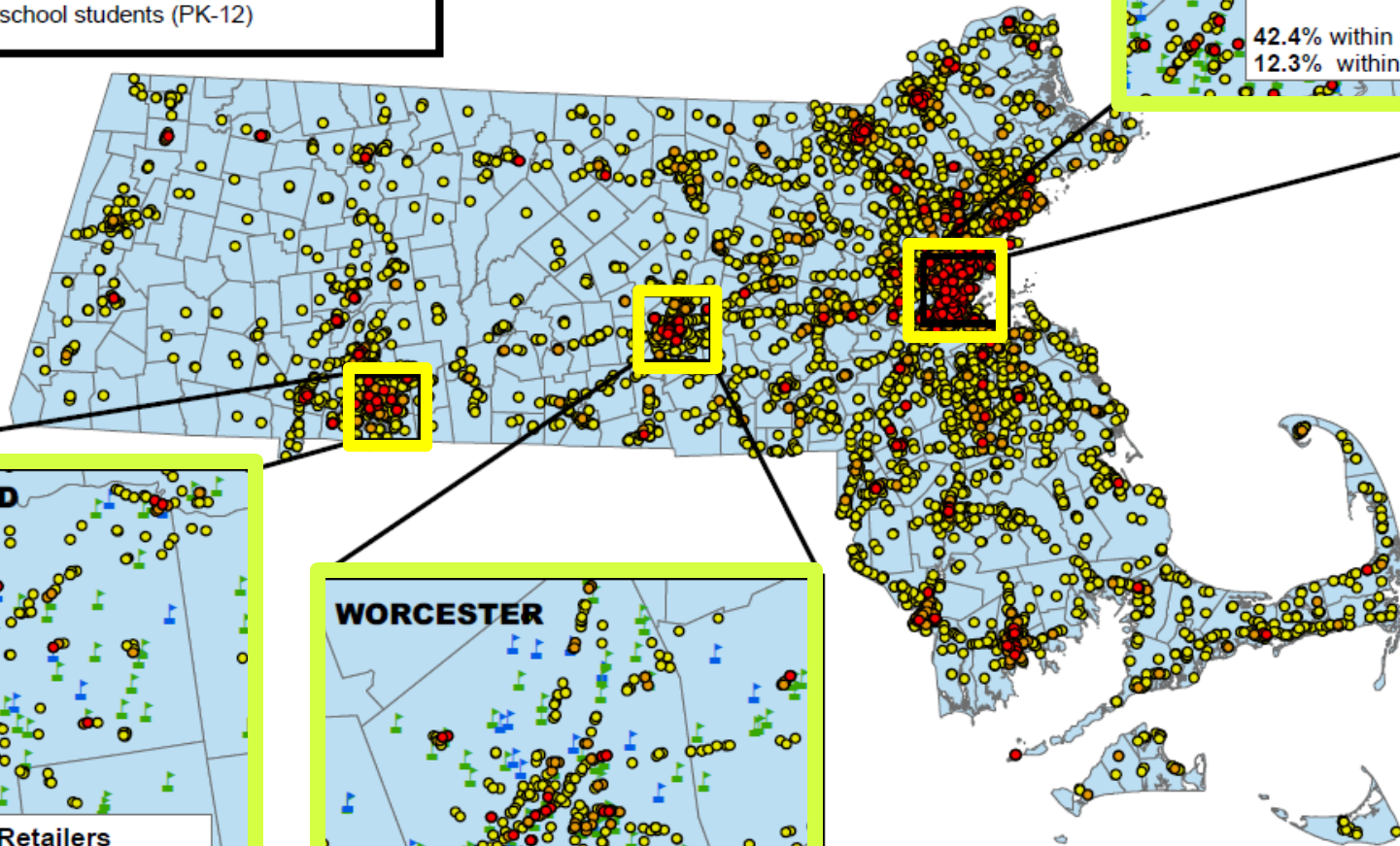
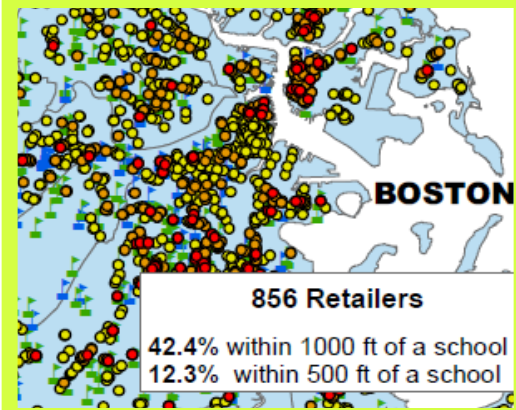
## Retailers

- Retailers within 500 ft of a school (315)
- Retailers within 1000 ft of a school (1,361)
- Retailers more than 1000 ft from a school (6,083)

## Schools

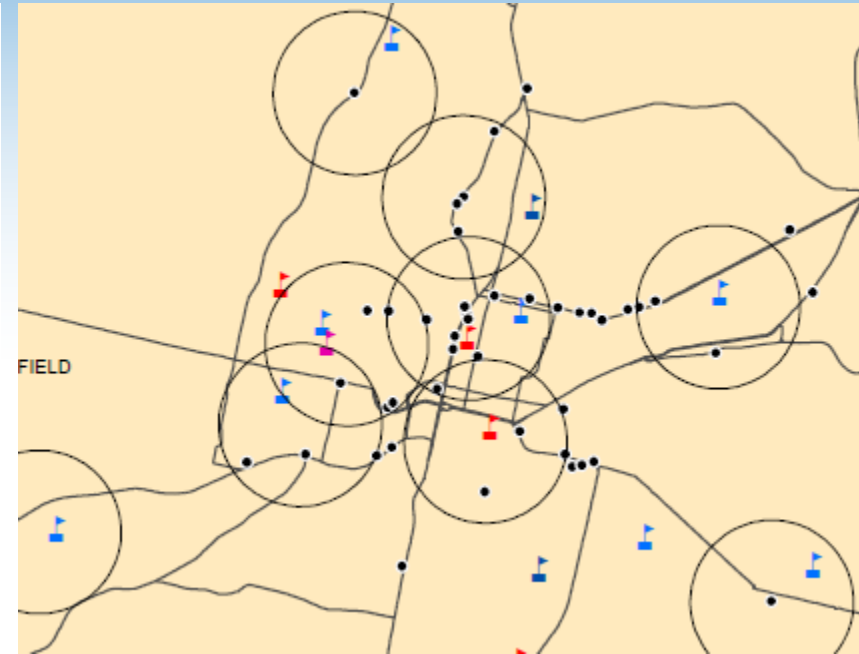
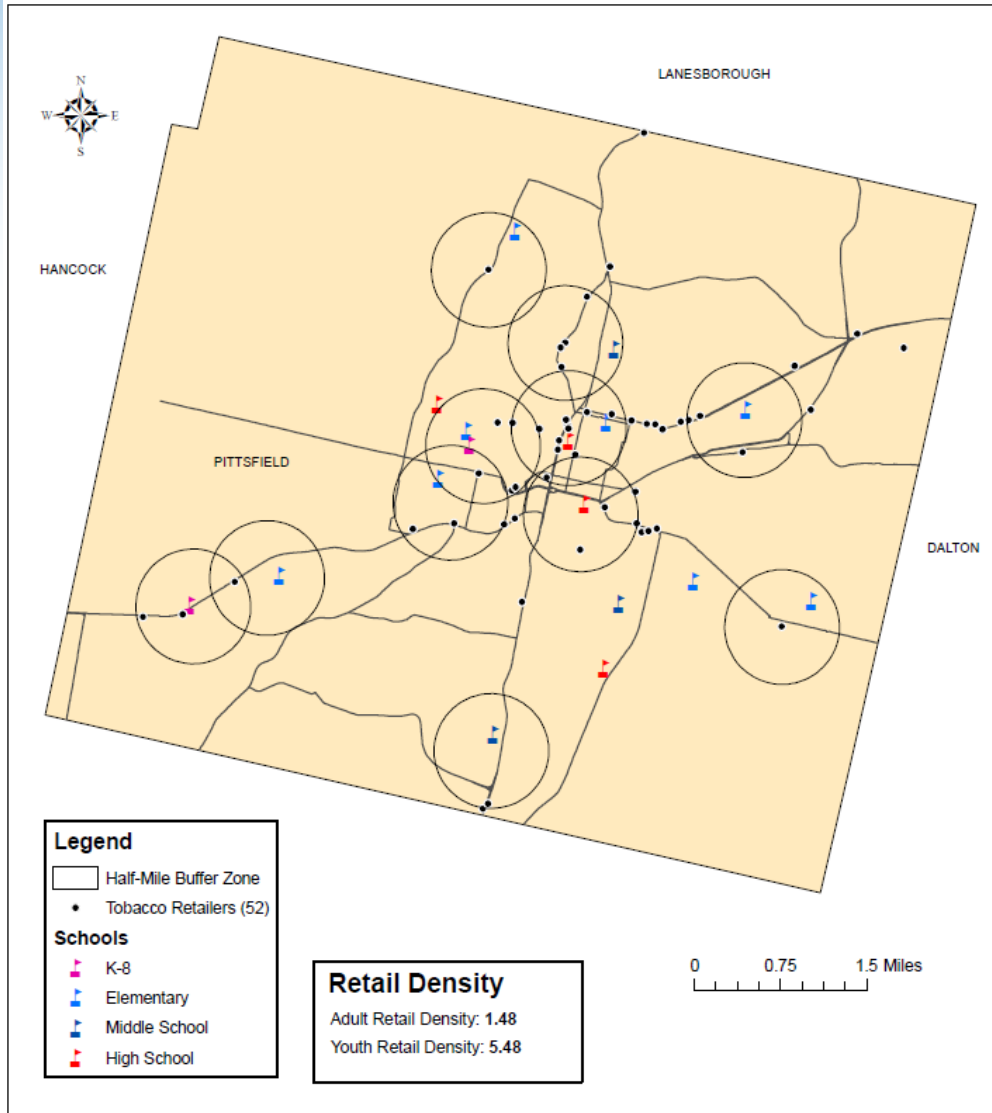
- ▲ Without high school students (PK-9)
- ▲ With high school students (PK-12)

# Tobacco Retailers



# Demonstrating tobacco-related influence in the community

PITTSFIELD: Tobacco Retailers, 2016

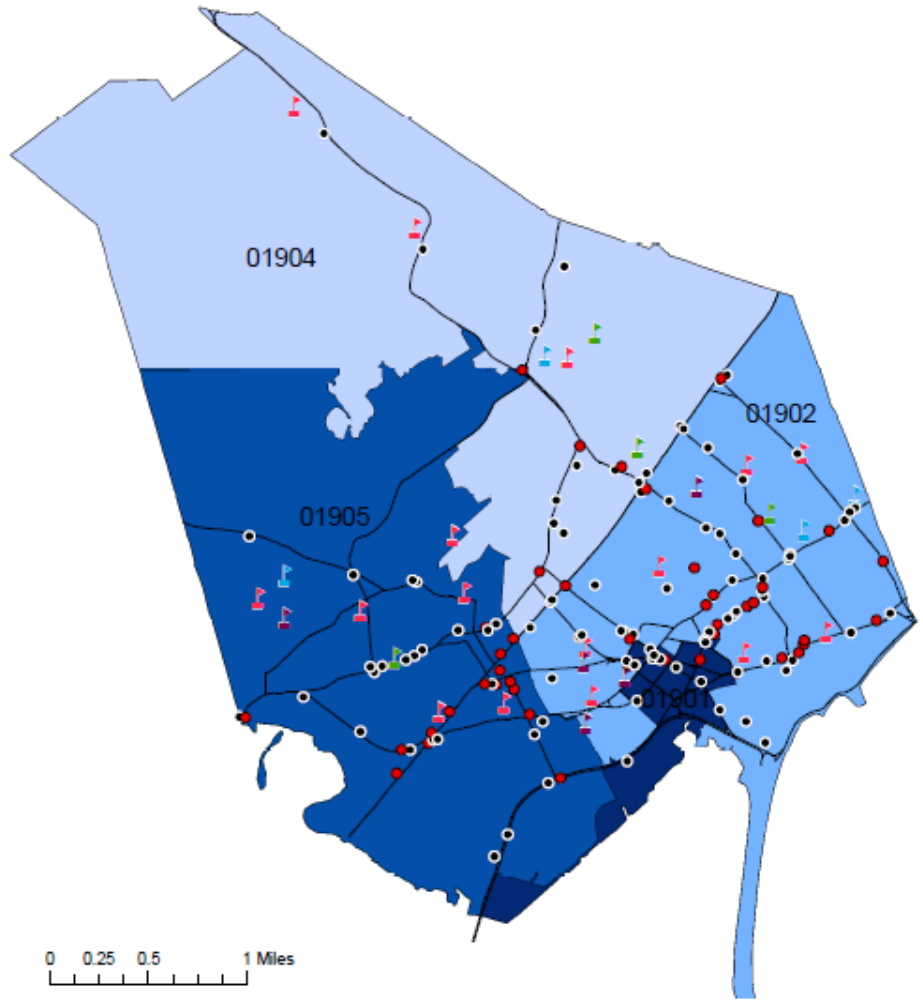


- Retail density near schools
- Comparison to statewide rates

**Can be used to educate local policy makers & stakeholders**

# Demonstrating tobacco-related influence in the community

## Lynn: Tobacco Retail Density by Zip Code, 2015



0 0.25 0.5 1 Miles

**Legend**

- Tobacco Retailers
- Tobacco Retailers with illegal sales to youth†

**Schools**

- 🏠 Elementary School
- 🏠 K-8 School
- 🏠 Middle School
- 🏠 High School

**Tobacco Retail Density by Zip Code\***

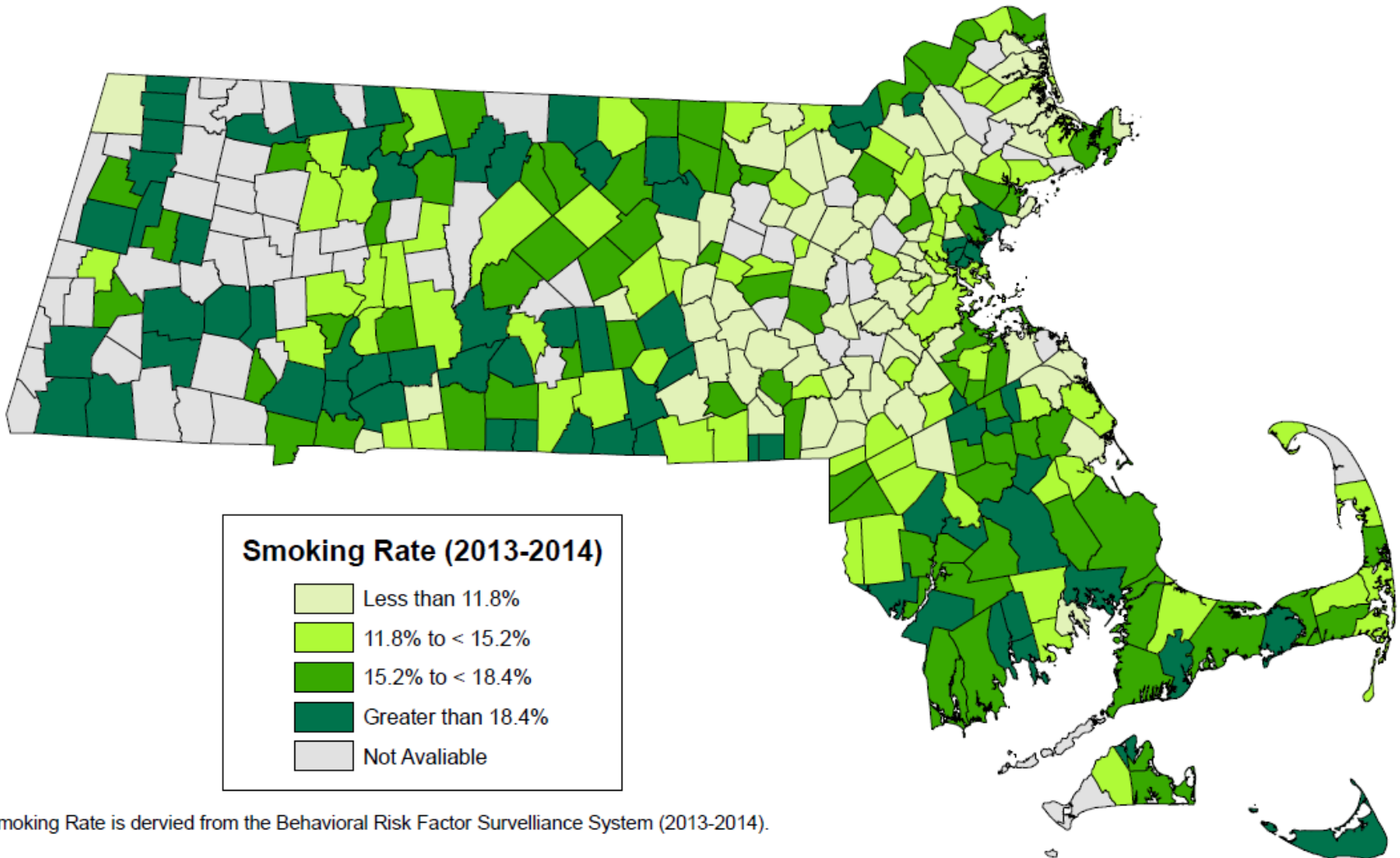
- 0.9
- 1.4
- 1.7
- 12.2

**Median Income by Zip Code**

- \$80,903
- \$37,275
- \$42,490
- \$23,467

# Geographic Disparities

## Smoking Rate (2013-2014) in Massachusetts

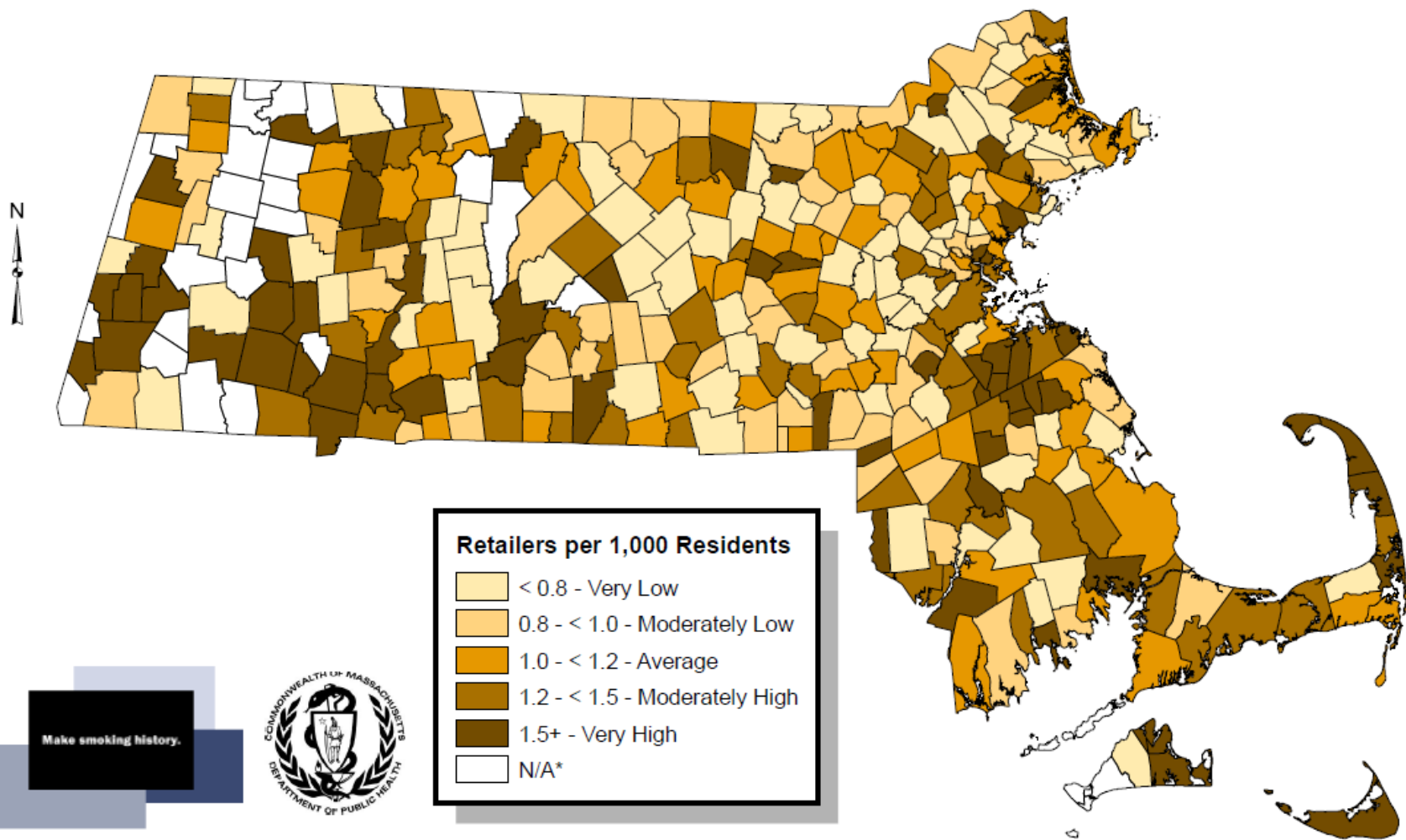


Smoking Rate is derived from the Behavioral Risk Factor Surveillance System (2013-2014).



# Geographic Disparities

## Density of Tobacco Retailers by Municipality per 1,000 Residents



\*Retail density is not calculated for towns with a population <1,000 residents.

# Environmental Justice Block Groups and Retail Density

## Exploratory spatial analysis

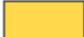



- Relationship between retail density, % non-white population and low-income populations

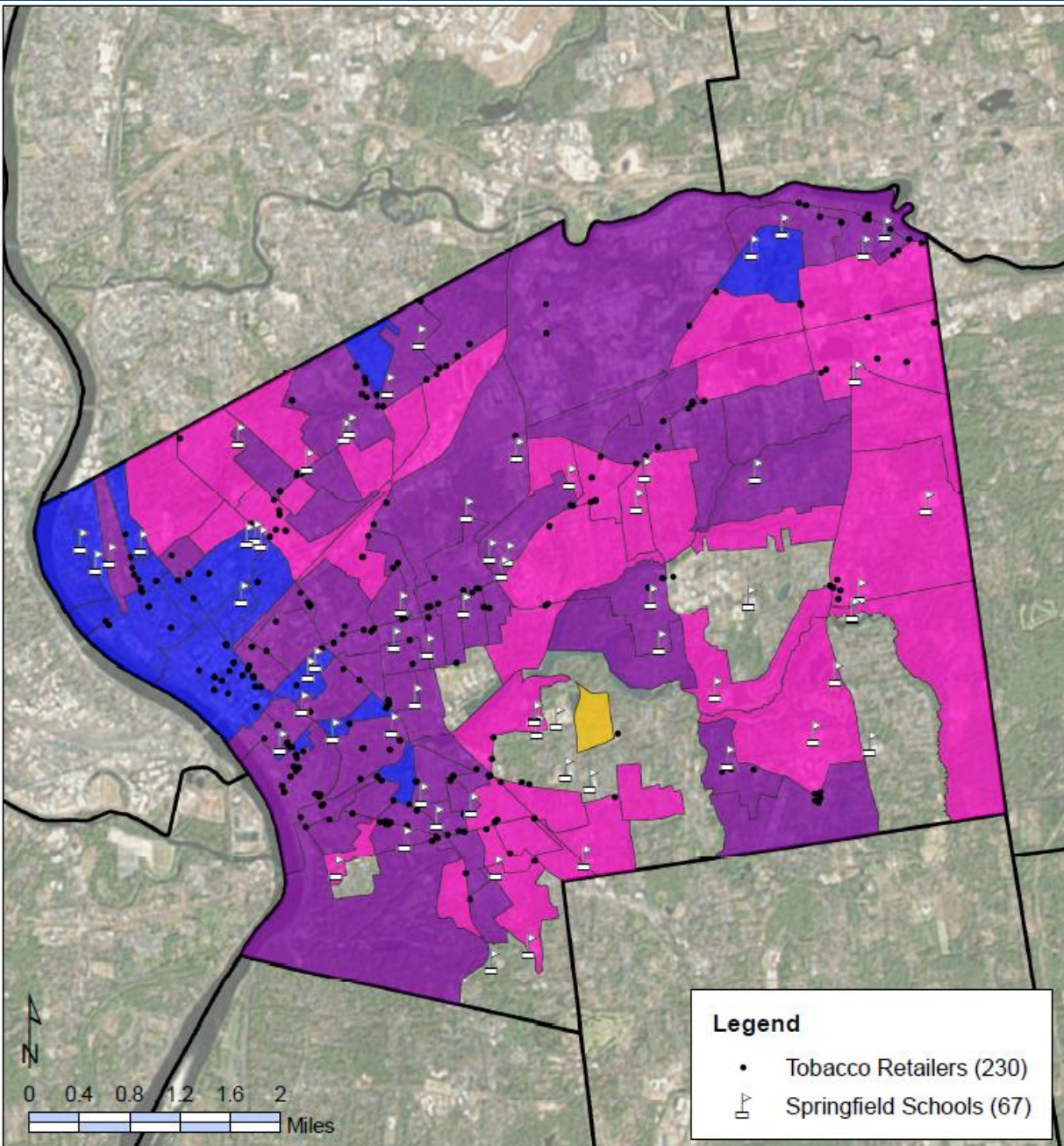
### Retail Density

243 Tobacco Retailers (97% of retailers) are located in EJ block groups.

EJ Region	% of Retailers	Retail Density
I	0	-
M	21.6%	1.98
M/I	59.6%	2.56
M/I/E	16.0%	2.84

### EJ Block Groups

	Income
	Minority or English Isolation
	Minority & Income
	Minority & Income & English Isolation

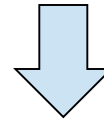


# Prioritization of program resources

MTCP has used community-level tobacco related metrics to inform the prioritization of program resources to high-need communities.

*Data visualization can help visually identify priority areas.*

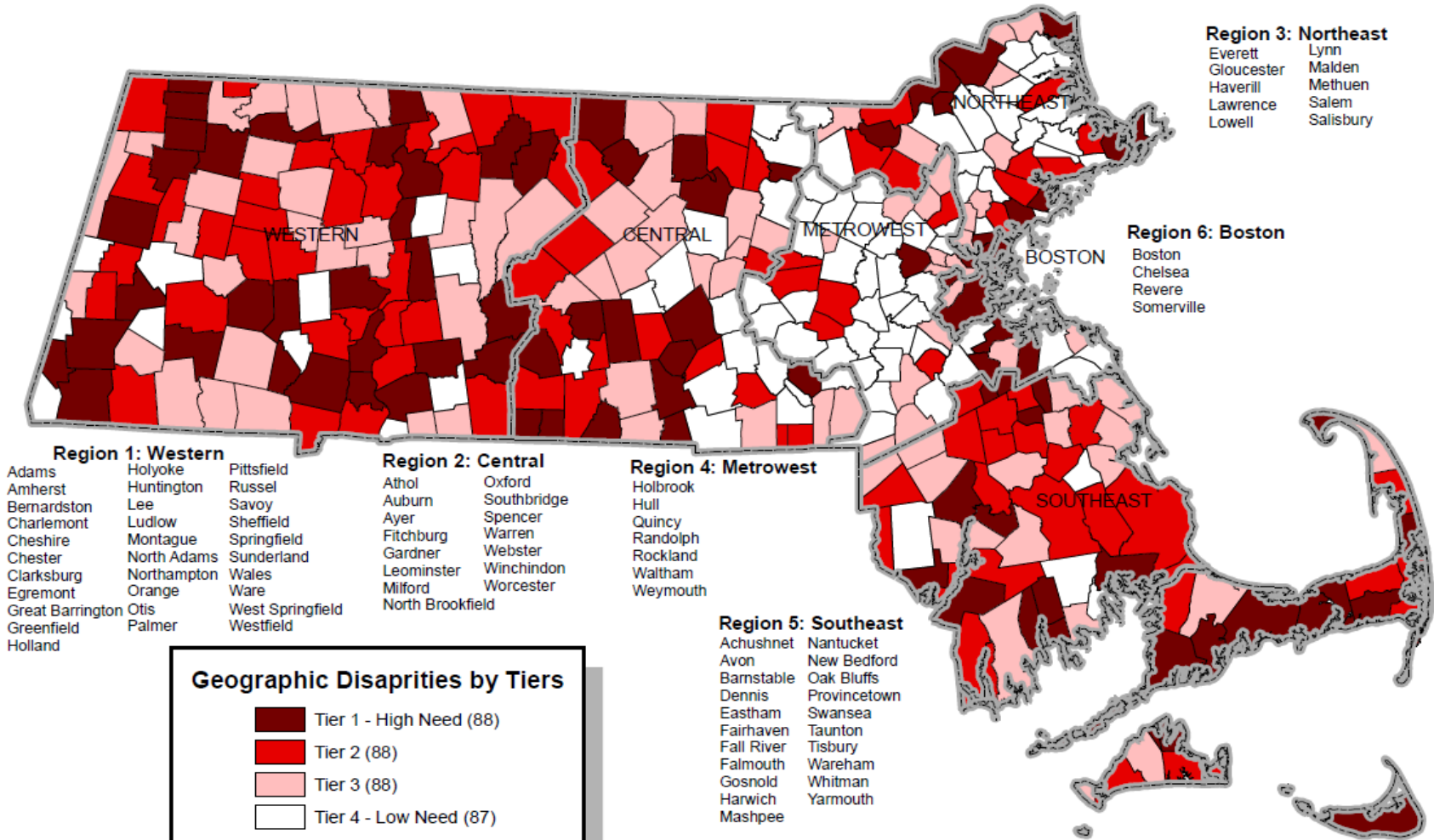
Turn this



Town_ID	CityTown	County	Tot_Pop	Median_In	pct_below	smoking tier	masshealth tier	mi tier	smoking	Income R	Poverty R	YRD Rat	ClassHealth	Mental Illness	Aggregate	Final R	Tier
209	North Adams	Berkshire	13708	35401	16.1	Tier 1(18.5- 32.2)	Tier 1(13.3-46)	Tier 1(11.2-23.8)	262	346	108	216	291	272	1495	249	1
201	New Bedford	Bristol	95072	36172	22.7	Tier 1(18.5- 32.2)	Tier 1(13.3-46)	Tier 1(11.2-23.8)	256	345	120	174	302	281	1478	246	1
149	Lawrence	Essex	76377	31631	26.5	Tier 1(18.5- 32.2)	Tier 1(13.3-46)	Tier 1(11.2-23.8)	248	350	122	156	310	284	1470	245	1
281	Springfield	Hampden	153060	34628	27.6	Tier 1(18.5- 32.2)	Tier 1(13.3-46)	Tier 1(11.2-23.8)	233	347	123	174	307	280	1464	244	1
137	Holyoke	Hampden	39880	31948	31.7	Tier 1(18.5- 32.2)	Tier 1(13.3-46)	Tier 1(11.2-23.8)	197	349	125	199	308	282	1460	243	1
163	Lynn	Essex	90329	43200	19.3	Tier 1(18.5- 32.2)	Tier 1(13.3-46)	Tier 1(11.2-23.8)	239	337	116	184	305	277	1458	243	1
278	Southbridge	Worcester	16719	47234	12.7	Tier 1(18.5- 32.2)	Tier 1(13.3-46)	Tier 1(11.2-23.8)	258	327	97	180	303	276	1441	240	1
309	Ware	Hampshire	9872	51094	13.7	Tier 1(18.5- 32.2)	Tier 1(13.3-46)	Tier 1(11.2-23.8)	259	313	101	212	284	270	1439	240	1
223	Orange	Franklin	7839	42809	11.8	Tier 1(18.5- 32.2)	Tier 1(13.3-46)	Tier 1(11.2-23.8)	253	339	93	208	279	259	1431	239	1
57	Chelsea	Suffolk	35177	40487	24.2	Tier 1(18.5- 32.2)	Tier 1(13.3-46)	Tier 1(11.2-23.8)	250	343	121	179	274	252	1419	237	1
192	Montague	Franklin	8437	42140	16.8	Tier 1(18.5- 32.2)	Tier 1(13.3-46)	Tier 1(11.2-23.8)	243	340	109	184	278	264	1418	236	1
94	Fairhaven	Bristol	15873	54144	10.2	Tier 1(18.5- 32.2)	Tier 1(13.3-46)	Tier 1(11.2-23.8)	213	300	84	236	299	278	1410	235	1
348	Worcester	Worcester	181045	45036	18.3	Tier 1(18.5- 32.2)	Tier 1(13.3-46)	Tier 1(11.2-23.8)	202	334	114	171	304	269	1394	232	1
160	Lowell	Middlesex	106519	50192	17.5	Tier 1(18.5- 32.2)	Tier 1(13.3-46)	Tier 1(11.2-23.8)	252	318	111	136	300	274	1391	232	1
236	Pittsfield	Berkshire	44737	43188	16	Tier 1(18.5- 32.2)	Tier 1(13.3-46)	Tier 1(11.2-23.8)	247	338	107	150	283	263	1388	231	1
248	Revere	Suffolk	51755	49759	14.7	Tier 1(18.5- 32.2)	Tier 1(13.3-46)	Tier 1(11.2-23.8)	224	321	103	161	297	273	1379	230	1
316	Webster	Worcester	16767	48640	12.2	Tier 1(18.5- 32.2)	Tier 1(13.3-46)	Tier 1(11.2-23.8)	232	325	96	202	264	260	1379	230	1
227	Palmer	Hampden	12140	50638	11.8	Tier 1(18.5- 32.2)	Tier 1(13.3-46)	Tier 1(11.2-23.8)	234	316	93	234	241	253	1371	229	1
114	Greenfield	Franklin	17456	45261	14.9	Tier 1(18.5- 32.2)	Tier 1(13.3-46)	Tier 1(11.2-23.8)	223	333	104	209	242	254	1365	228	1
93	Everett	Middlesex	41667	49737	11.9	Tier 1(18.5- 32.2)	Tier 2(10.7 - 13.2)	Tier 1(11.2-23.8)	257	322	94	194	222	266	1355	226	1
113	Great Barrington	Berkshire	7104	52843	8.5	Tier 1(18.5- 32.2)	Tier 1(13.3-46)	Tier 1(11.2-23.8)	235	307	72	246	269	226	1355	226	1
310	Wareham	Plymouth	21822	54451	9	Tier 1(18.5- 32.2)	Tier 1(13.3-46)	Tier 1(11.2-23.8)	246	299	76	233	237	258	1349	225	1
325	West Springfield	Hampden	28391	51358	12.2	Tier 1(18.5- 32.2)	Tier 1(13.3-46)	Tier 1(11.2-23.8)	195	312	96	207	281	256	1347	225	1
4	Adams	Berkshire	8485	38340	10.3	Tier 1(18.5- 32.2)	Tier 1(13.3-46)	Tier 1(11.2-23.8)	260	344	85	145	250	262	1346	224	1
293	Taunton	Bristol	55874	53600	12.1	Tier 1(18.5- 32.2)	Tier 1(13.3-46)	Tier 1(11.2-23.8)	236	303	95	164	277	265	1340	223	1
329	Westfield	Hampden	41094	51620	11.8	Tier 1(18.5- 32.2)	Tier 1(13.3-46)	Tier 1(11.2-23.8)	201	310	93	217	264	250	1335	223	1
289	Sunderland	Franklin	3684	53945	16.1	Tier 2(15.3 - 18.2)	Tier 1(13.3-46)	Tier 1(11.2-23.8)	176	301	108	244	265	227	1321	220	1

# Into THIS

## Geographic Disparities in Massachusetts, 2016



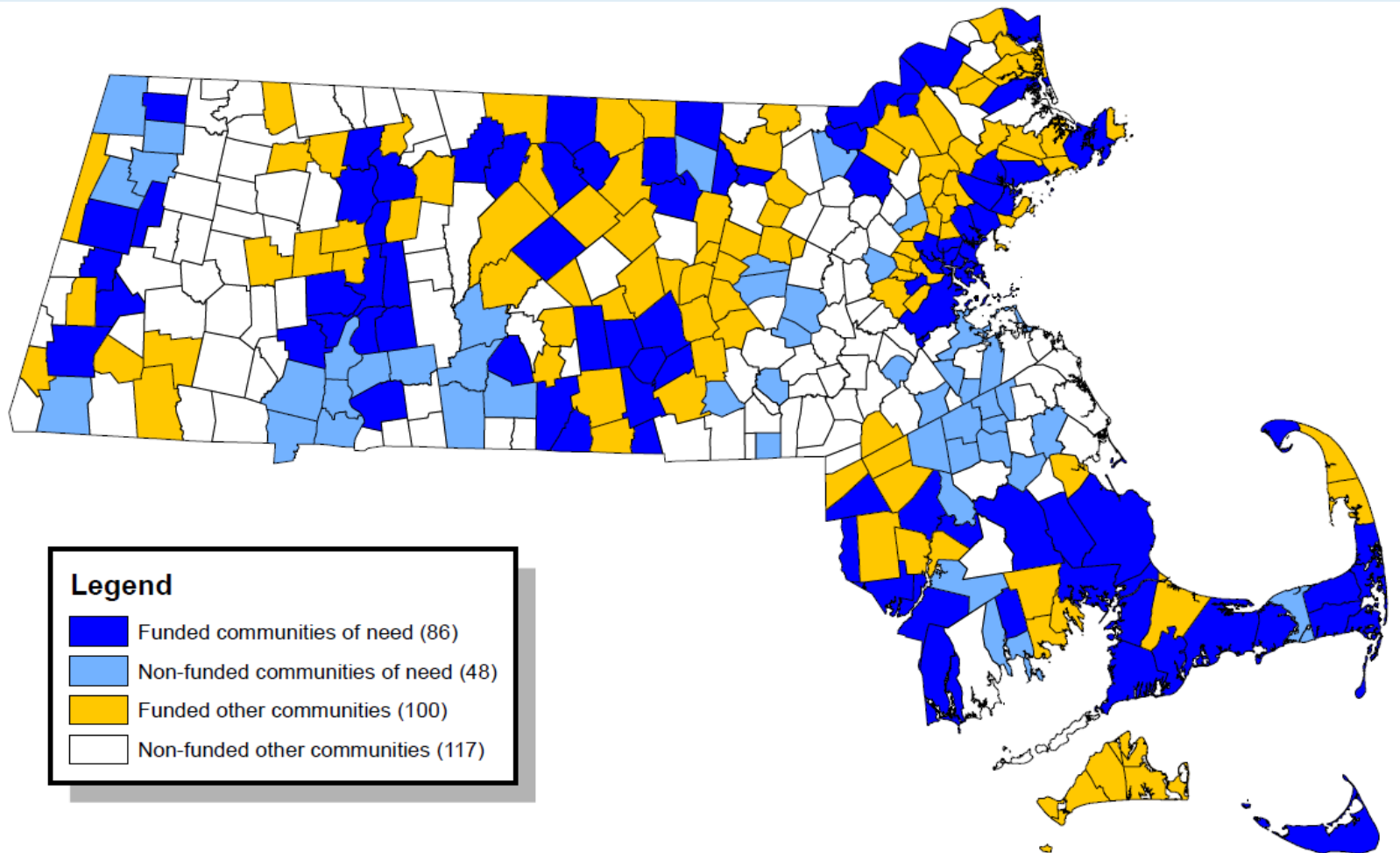
\*Tier 1 communities, or the highest need communities, are listed by region

The criteria to determine if a town is a priority community includes: median income, percent below federal poverty level, smoking rate, youth retail density, percent of residents with Medicaid and percent of residents with mental illness.

Median income and percent below federal poverty level is obtained from the 2010 U.S. Census  
Smoking rate and percent of residents with Medicaid or mental illness were calculated using small area estimates based on 2013-2014 BRFS

# Prioritization of program resources

Identify current funding and make adjustments to better address tobacco inequities.



# Measuring program impact

Using maps & census data to illustrate program *reach*

- Population Reached by Healthy Eating and Physical Activity Sites**
- Farmers Markets in Maintenance
  - Markets in Maintenance
  - Markets in Conversion
  - Farmers Markets in Conversion
  - Environmental Justice Block Groups



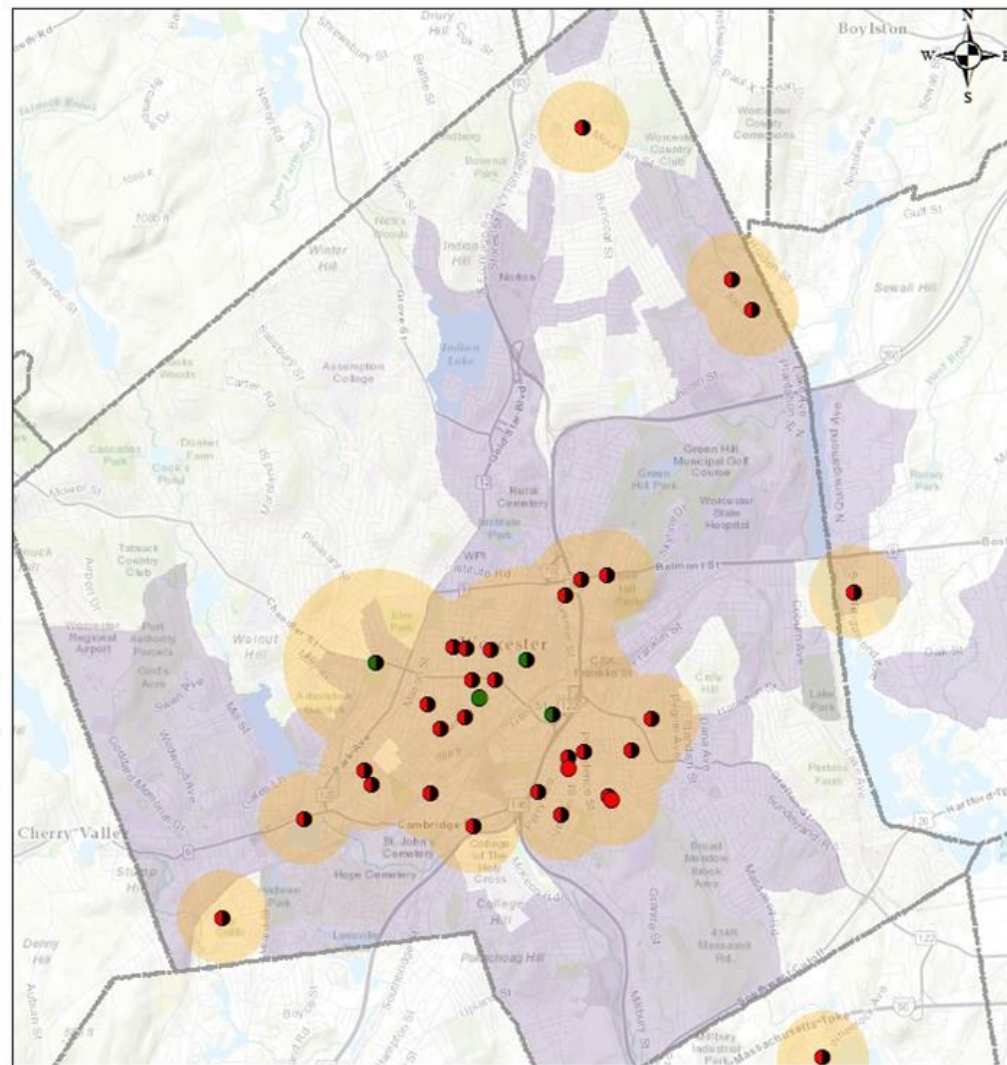
## Worcester

### Population Reached by Healthy Eating Sites

% of total community population reached by sites in maintenance	16%
% of "High Need" population reached by sites in maintenance	23%
% of additional population reached by sites in conversion	27%

Sites in "conversion" are in one of several phases of assessment and planning prior to making a healthy change in operations or being implemented for physical activity. Sites "in maintenance" or "implementation" have changed operations or have implemented a project plan.

Buffers around Mass in Motion sites vary from ¼ mile to 1 mile depending on the type of site. Population reach is calculated by estimating the population that lives in block groups reached by the buffers. Block groups shaded in purple represent areas of high need based on household income, minority population, or linguistic isolation.



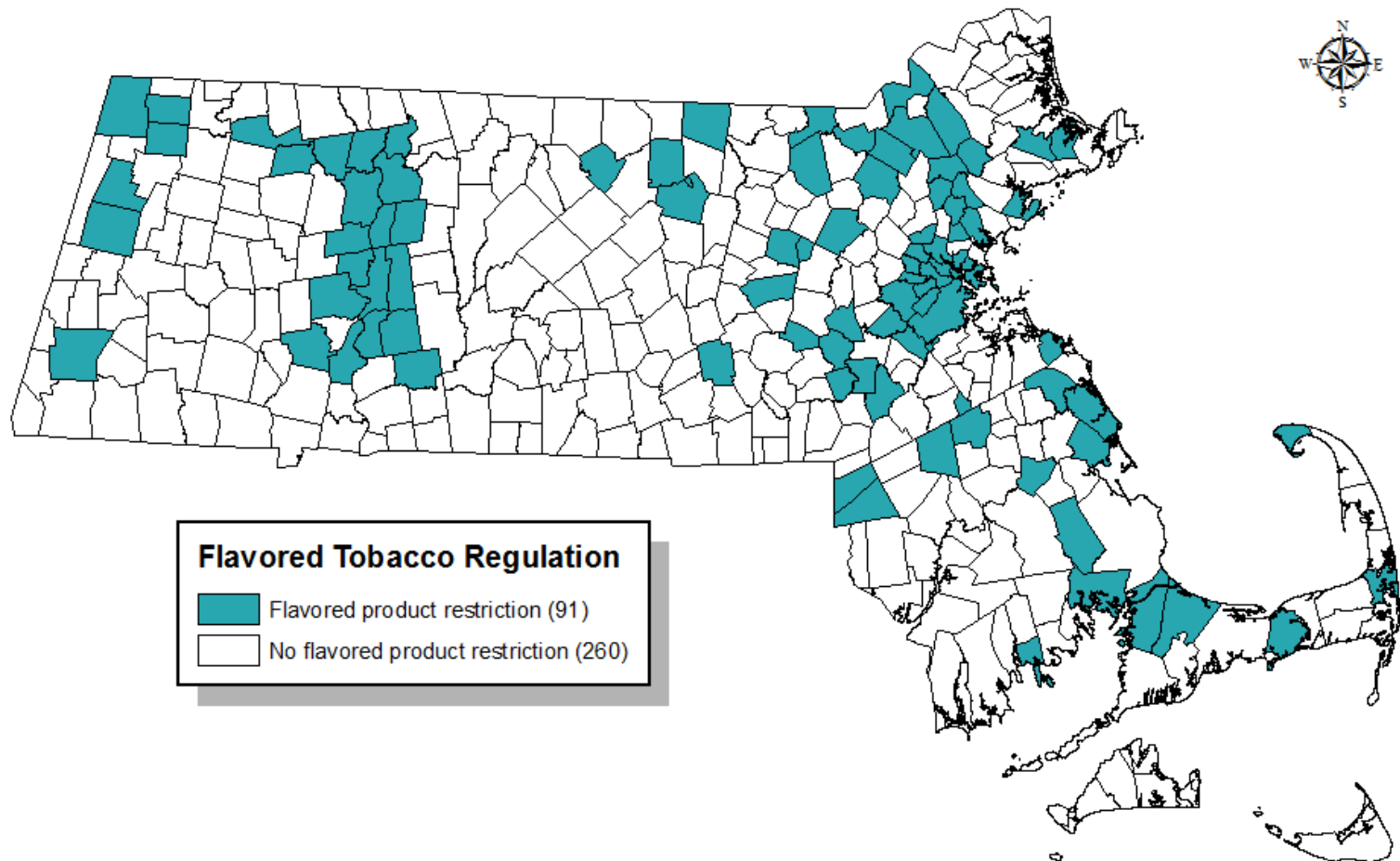
0 0.75 1.5 3 Miles

Updated as of June 2016

# Policy tracking & evaluation

Display which municipalities have certain priority policies

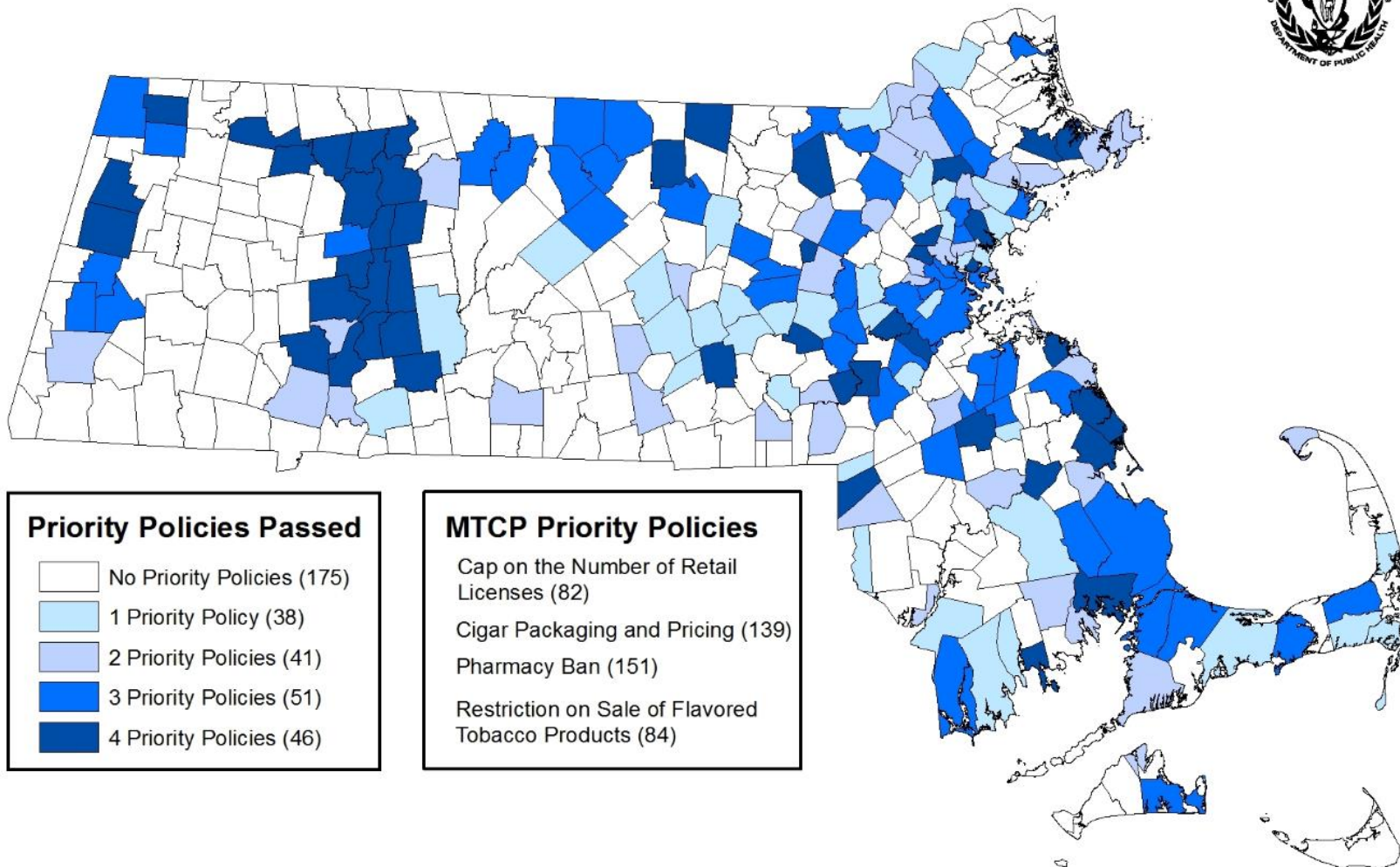
## Municipalities with Regulations Restricting the Sale of Flavored Tobacco Products



# Policy tracking & evaluation

Visually show policy progress to date

Priority Policies Passed in Massachusetts Communities, 2017

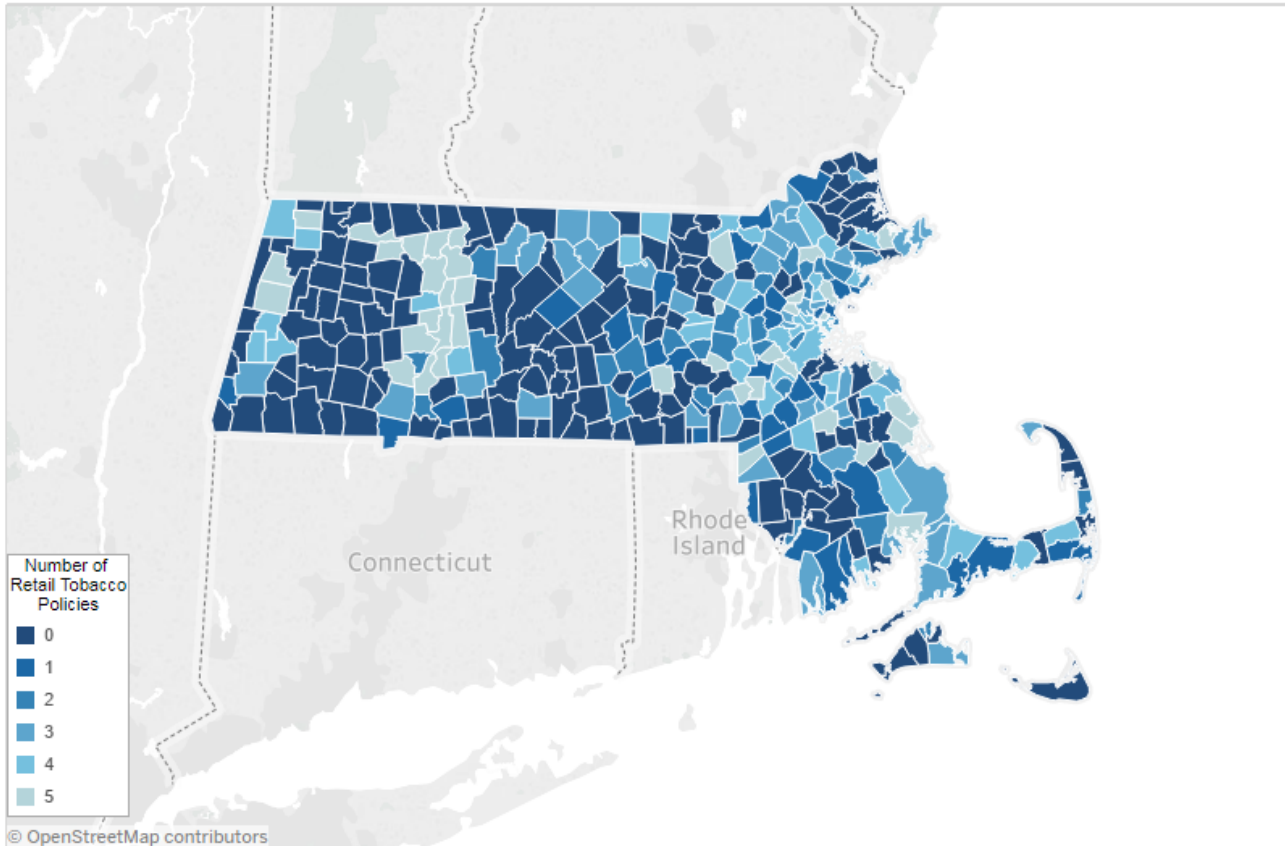




# Mapping in Tableau

# Tobacco Regulations in Massachusetts

Ban of Tobacco Sale in Pharmacies	Cap on # of Retail Licenses	Minimum Legal Sale Age of 21	Restriction on Packaging of Cheap Cigars	Restriction on Sale of Flavored Products	No Retail Tobacco Policies
151	82	138	139	84	156



Policies by City or County:

City/Town

County

Policy Filters

Retail Tobacco Policy

- (All)
- Ban of Tobacco Sale in Pharmacies
- Cap on # of Retail Licenses
- Minimum Legal Sale Age of 21
- Restriction on Packaging of Cheap Cigars
- Restriction on Sale of Flavored Products
- No Retail Tobacco Policies

Number of Policies

- (All)
- No Tobacco Policy: 0 Policies
- 1-2 Policies
- 3 Policies
- Strong/Comprehensive: 4-5 Policies

City/Town	Total Number of Retail Tobacco Policies	Ban of Tobacco Sale in Pharmacies	Cap on # of Retail Licenses	Minimum Legal Sale Age of 21	Restriction on Packaging of Cheap Cigars	Restriction on Sale of Flavored Products	No Retail Tobacco Policies
Abington	3	×	×		×		
Acton	3	×		×	×		
Acushnet	0						×
Adams	4	×		×	×	×	
Agawam	0						×



Updated 2/28/17

# Tableau Overview

Tableau is an interactive visualization software for internal or external use

- *Desktop, Server, Online, Public*

Can use for interactive mapping with the ability to display more information than a GIS map

- *Can also make charts, tables, graphs*

Users can hover and filter to change the visualization

Can display multiple metrics at one time

- *Easier comparison between metrics*

Easily updated

# Live Tableau Demo

<http://mahb.org/tobaccomaps/>

Member Login Job Postings



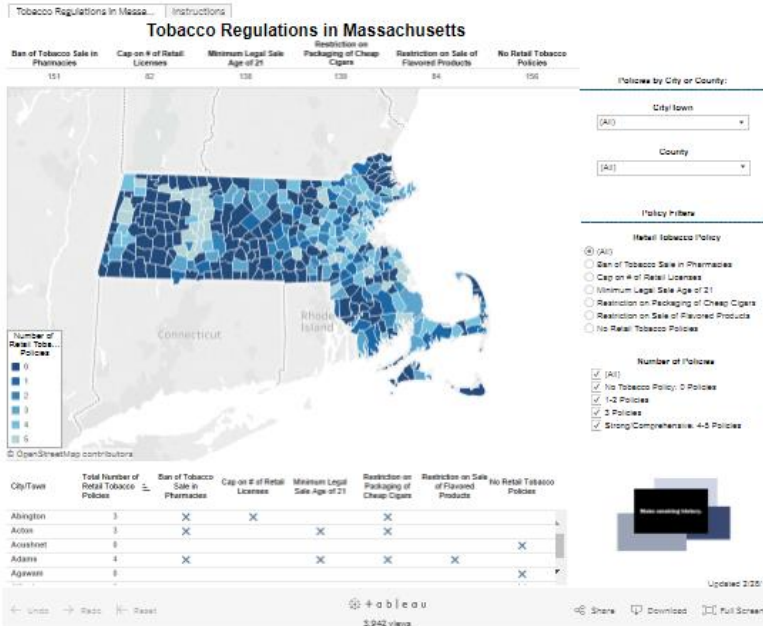
Home About Boards of Health Resources Join Programs Contact

## Tobacco Maps of Massachusetts

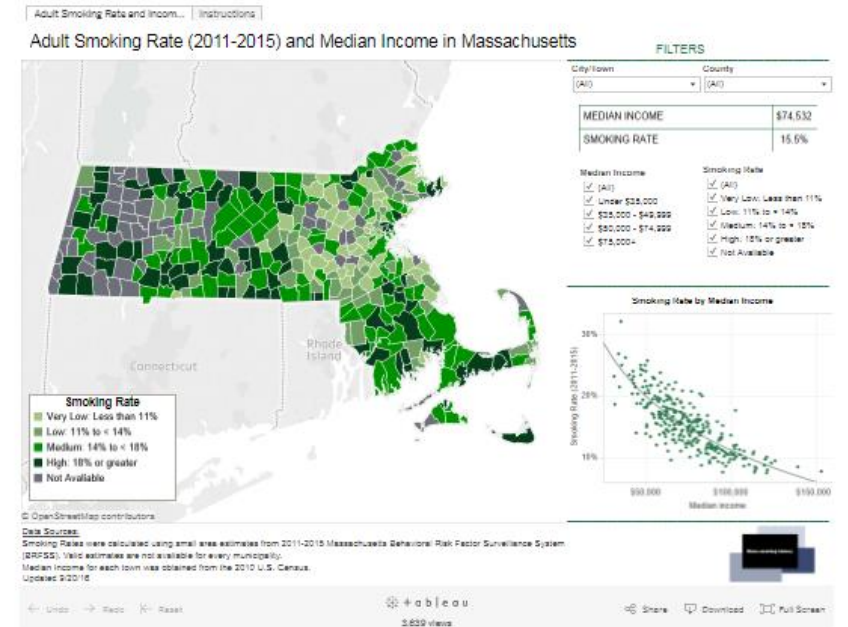
by Marcia Benes | Sep 18, 2016 | Maps | 1 comment

The two maps below display the key tobacco control regulations and smoking rates of cities and towns in Massachusetts.

**Tobacco Regulations in Massachusetts:** This map displays the cities and towns in Massachusetts that have passed key retail tobacco regulation. Reducing the tobacco industry's influence in the retail environment is a key strategy in ensuring that young people do not become addicted to tobacco. [Click here](#) for more information on local regulations. Use the "Instructions" tab for more information on how to use this map.



**Smoking Rates and Median Income in Massachusetts:** This map displays the 5-year smoking rate and median income for municipalities in Massachusetts. Use the "Instructions" tab for more information on how to use this map.



# ArcGIS and Tableau

## ArcGIS

## Tableau

Purpose

Desktop mapping of data;  
Used to create static maps

Desktop & Online visualization  
of data; can create interactive  
maps

Ease of  
Use

Clean data beforehand;  
Requires some technical skills

Can manipulate data in  
program; Interface is mostly  
drag and drop

Analysis

Can perform a variety of  
spatial analyses

More emphasis on visualization;  
less analysis

Display

Good for focusing on a  
particular topic; harder to  
display multiple relationships  
at one time

Easier to display multiple  
relationships at one time

Updating

May have to re-upload data &  
create new exports

Make edits to source data and  
refresh in Tableau

# ArcGIS and Tableau

MTCP primarily uses:

## ArcGIS for:

- Displaying static maps with one primary focus
  - # of municipalities with a particular policy
  - Retail density and zipcode
  - Retail density near schools
- Easily exported/printed & shared with staff

## Tableau for:

- Interacting with maps to show multiple relationships at once
  - Towns with both cigar or flavor policies
  - Compare smoking rates across a county
- Easily shared & viewed online for public and field staff; harder to print

# Summary



**Mapping** is an important tool used in MTCP evaluation efforts for visualizing tobacco-related metrics in Massachusetts communities

- Retail Density & Retailers near schools
- Geographic disparities (e.g. smoking rates)
- Prioritizing resources & measuring program impact
- Policy progress



Data visualization softwares such as *ArcGIS* and *Tableau* can help inform evaluators, program staff, field staff & the general public about local tobacco data

# THANK YOU

Questions?

*E-mail:* [Lindsay.Kephart@state.ma.us](mailto:Lindsay.Kephart@state.ma.us)